

ONLINE TIMED AUCTION - EVERYTHING SELLS TO THE HIGHEST BIDDER

# EURO AUCTIONS

Free  
Internet  
Bidding

## BRISBANE

BIDDING OPENS  
5<sup>th</sup> July 2018

BIDDING CLOSES  
19<sup>th</sup> July 2018

## Online Timed Auction



2013 CAT 140M



Unused CAT 308E2CR

[www.euroauctions.com](http://www.euroauctions.com)

For more information call  
**+61 7 3607 4800**

## BRISBANE Online Timed Auction

### Office Address:

161 Sandmere Road  
Pinkenba  
Brisbane  
QLD 4008

T. +61 7360 74800

E. [info@euroauctions.com](mailto:info@euroauctions.com)



Register for free at  
[euroauctions.com](http://euroauctions.com)  
to bid online at our  
auctions.

For technical assistance at this  
auction please call:  
**+44 2882 897 100**

### Notice to Purchasers

This sale will be conducted in AUSTRALIAN DOLLARS (\$). Auctioneers reserve the right to refuse to issue a Bidding Number. This Brochure is only a guide please inspect the equipment.

### Buyers Commission/GST

Buyer's commission will be charged at a rate of 2.5% on Hammer Price. GST will be charged on the buyer's commission at 10%. GST of 10% will be charged on the hammer price. This will be refunded to non-Australian buyers upon receipt of export documents showing removal from the Australia.

### Registration Requirements

All new Buyers must provide the following in order to obtain a Bidder Number.

- Photographic Identification (Passport/Driving Licence) & Company ABN number
- Deposit - a minimum deposit of £10,000/€15,000/ \$10,000 AUD/ \$15,000 USD via E-payment, Cash, Debit/Credit Card or Bank Transfer. This will guarantee a credit limit of 50,000 in the respective currency. All deposits must be received in full before you can be approved for bidding either Onsite or Online. If you wish to spend more than 50,000 a further 10% of the total projected spend is required. We require a deposit 24 hours before the sale. Please allow 3 working days for us to receive your deposit Via Bank Transfer. Deposits paid via bank transfer, debit or credit card will be returned approximately 7 days after the auction.

### Payment

Cash or telegraphic transfer will be acceptable. Credit Card Payments are also accepted but are subject to a 1.5% bank service charge which is non refundable. Debit Card Payments are also accepted – no service charge is applicable.

**All printed information regarding this sale is merely a guide, subject to change and neither the auction company, sellers or publishers shall be liable for any errors in this brochure.**

## Sales Representatives

For more information on this auction please call your local sales rep:

#### Craig Hart

M: +61 (0) 4179 27337

E: [chart@euroauctions.com](mailto:chart@euroauctions.com)

#### Paul Haynes

M: +61 (0) 4295 34493

E: [phaynes@euroauctions.com](mailto:phaynes@euroauctions.com)

#### Joe Rafferty

M: +44 (0) 7821 719 969

E: [jrafferty@euroauctions.com](mailto:jrafferty@euroauctions.com)

## Yard Opening Times:

**Monday - Thursday**

7am - 4pm

**Friday**

7am - 3.30pm

## How to bid at our Online Timed Auctions

Online Timed Auctions are designed to sell items online without the need for an auctioneer. Bidding can open up to 1 month before the auction and each lot closes at staggered intervals during the auction period. Every item is sold to the highest bidder when bidding closes. If a bid is received within the last 60 seconds the lot is re-opened for a further 60 seconds.

### Register to bid Online

The process for registering to bid in our Timed Auctions is the same as for our Live Online Auctions; You must first have an online Bidding account. Once you have created an Online Bidder Account, you need to register for the auction in which you wish to Bid. **Please Note:** You need to register separately for each individual Auction. Please ensure you have registered at least 48 Hours in advance to ensure your account has been approved for bidding in good time. Once you have been approved to bid you will receive an email of notification from Euro Auctions with details of your Bidder Number & Approved Credit Limit. If you need to increase your Credit Limit, you will likely have to supply an additional deposit. Please contact your nearest Euro Auctions Office in such cases.

### How bidding Works

#### Starting Bid

The starting bid for each lot is set at a percentage of the expected Hammer Price for the lot. It should be noted that all items in our Auction are unreserved and this price is simply to get bidding started.

#### Increments

Increments are calculated by referencing the current bid against the auction increment table See below our Default Increment table:

Bids over 0.00 must be in 10.00 increments

Bids over 100.00 must be in 50.00 increments

Bids over 1000.00 must be in 100.00 increments

Bids over 2000.00 must be in 250.00 increments

Bids over 30000.00 must be in 500.00 increments

Bids over 50000.00 must be in 1000.00 increments

It should be noted that this increment table can change in some Auctions. The Increment table in use for any Auction can be viewed via the Bid Increments link in any Item Detail page

#### Maximum Bids

When placing a Bid, the default bid a user is asked to place is the Minimum Next Bid which is set based on the Increments table. But the user also has the option of entering a Maximum Bid. This is the Maximum amount a bidder wishes to pay for the lot & must be a valid value as determined by the Increments table. Once a bidder has placed a maximum bid, any subsequent bids from other bidders that are less than the users Maximum bid, will only increase the current bid & asking price, but the user who entered the maximum bid will remain the high bidder, until another user enters a greater bid.

#### Closing Times

Once the inventory is added to the Catalogue, closing times will be set for each item & displayed in the catalogue listings. Usually groups of 2 or 4 similar lots will all have the same closing times set for them. The closing times set for each item will not be an exact time, but a time period in which bidding for the item is due to close, e.g. 11:52:00 – 11:58:00. If any bids are received for the item within this time range, the final closing time will be extended by 1 minute. So instead of closing at 11:56:00, the item will remain open for bidding for another minute until 11:57:00. If another bid is received, bidding will be extended once again by another minute.

#### Placing Bids

The Auction Catalogue may be available up to 1 month prior to an Online Timed Auction closing. In the period prior to lots closing, bidders may place a Maximum Bid at any time. You will receive a confirmation email once your bid is placed. You will also receive email notification when your maximum bid has been outbid by another bidder, or if you have won the Lot. Browse to the item in the Auction Catalogue, here you will find a summary list of all items in the Auction with Current Bid, Asking Price & Closing Times. Click on the Title Description hyperlink of the Lot you wish to place a bid on. This will take you to a detailed description of the Lot you have selected with the Current Asking Price & Closing Time for that particular Lot. Enter your Maximum bid & Click Confirm Max Bid. You will be taken to another screen to once again confirm the Bid you are placing. Click Confirm. You will now be taken back to the Lot Description page. You will now see that either You are High Bidder or that your Max Bid has been outbid by another bidder's Max Price. This item will now be added to your Watching & Bidding Lists in your My Items section of our website.



Unused JCB 533-105



Unused Barford D16 16 Ton Twin Axle Dump Trailer



Unused Barford S104 Inclined 3 Way Split Screen



Unused Barford TR6536 Tracked Stockpile Conveyor



**Unused XCG 3660 Wheeled Radial Stockpile Conveyor 60ft x 36" - choice**



**Unused Ashita AG-40 Skid Mounted 30KvA**



**Unused Ashita DP40E 4" Self-Priming Water Pumps - choice**



**Unused Wacker Neuson MDP3 3" Water Pumps - choice**



**Unused Schmelzer SG-25 25KvA**



**Unused Schmelzer SG-15 15KvA**



**Large Selection of Unused Engines**



**2018 Barford FB990 990 Litre Fully Bunded Fuel Bowser**



**Unused Ashita DG1100SE3 10KvA Silent Diesel Generator, 3 phase - choice**



**Unused Ashita AG7500D 3 Phase 6.25KvA Air Cooled Diesel Generator - choice**



**Large Selection of Unused Fuel Bowzers**



**Unused 3 PTO Heavy Duty Wood Chipper to Suit 40-70Hp - choice**



**Unused Ashita AG7500D Single Phase 6.25KvA Air Cooled Diesel - choice**



**Easy Kleen Magnum GOLD Pressure Washer - choice**



**12-14 Wacker Neuson EH100/230 Electric Breaker - choice**



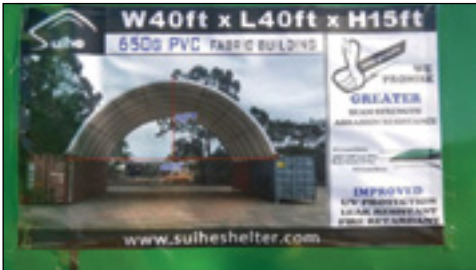
**Large Selection of Unused Hydraulic Breakers to Suit 1.2-42 Ton Excavators**



**Large selection of Unused Excavator Attachments**



**Large Selection of Unused Buckets**



**Unused Containers and Storage Shelters - choice**



**Unused 6m x 6m Marquee Event Tent C/W Side Walls, Windows & Zip Doors - choice**



**Unused Work Benches/Tool Cabinets - choice**



**Unused 2.2m x 0.66m x 0.8m Welding Table - choice**



**3.0m Wrought Iron Gates**



**Large selection of Unused Garage Equipment**